

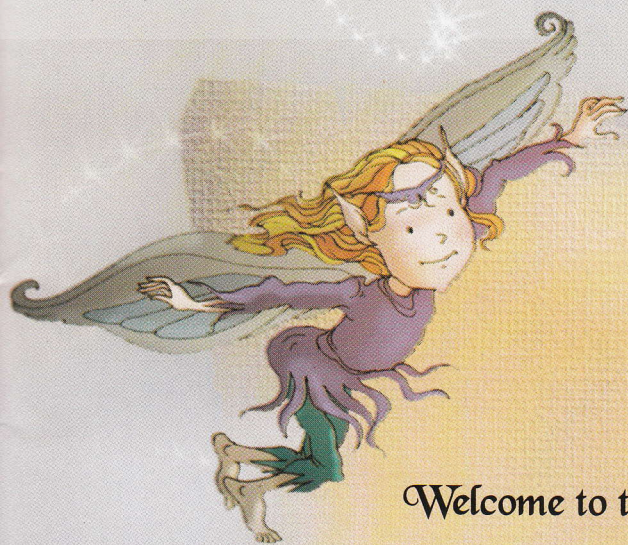
Libris .RO

Respect pentru oameni și cărți

Alice-Lorezta Mastacan

# Fairyland





## Table of Contents

### **Welcome to the Fairyland**

Magical Characters / 5

The Way Fairies Look Like / 7

Where Fairies Live / 8

Traditional Features of Fairies / 10

Fairies of the Underground / 12

Fairies of the Ley Ground / 20

Indoor Fairies / 24

Outdoor Fairies / 30

Fairies Nowadays / 36

### **Fairy Tales and Poems**

Just a Simple Question / 39

The Boastful Shoemaker / 40

The Naughty Pixie / 48

The Magic Weapon / 53

Sparkles in the Dark / 58

Can You Remember? / 59

Glossary / 61



*Imagination sets the spirit free,  
Into distant lands of fantasy,  
Close your eyes and you will see;  
Within your mind there lies the key.*

# Magical Characters

Do you like fairy tales? Do you believe in magic? In many parts of the world, especially in the north-west of Europe, people have long believed that human-like creatures with magical powers exist. They play a big role in tall tales and make you remember the story for the rest of your life. You must have heard about them at least once in your childhood.

The general term used by the English-speaking people to name these creatures is 'fairies'.



*How many fairies can you see in this picture?*

Besides talking animals or birds or any other imaginary characters, such as ogres, dragons or genii, 'fairies' are a well-defined group where each individual has certain skills and abilities.

The group consists of: dwarfs, gnomes, elves, gremlins, goblins, hobgoblins, imps, banshees, trolls, pixies, nixies, brownies, uldas, barbegazi and leprechauns. They are all known in folklore as creatures with supernatural powers.

The lore associated with the 'fairies' made these magical characters survive across the centuries. Perhaps they are the longest-surviving testimony to Celtic mythology.





## The Way Fairies Look Like

Legend says that fairies may be plump or thin, funny or ugly, good or wicked. They are generally in human form, but they are 'little people'. Some are tiny, some not. Some are a few inches high, others are a bit taller, but none of them is giant. It is said that if they dance on a dewdrop, they never break it.

Fairies may have small bead-like eyes or big inquisitive eyes. They may be bold or have bushy hair and busy eyebrows. Their ears are mostly large and pointed. The nose can be just like a potato - round and strong, with large nostrils - or just like a carrot - long, thin and going down.

Except the elves, almost all the fairies are old and not exactly good-looking. These mischief-making creatures have a lot of wrinkles. Some have black or brownish beauty-spots, others have a few teeth in the mouth. But most of them have something in common: a beard and a wicked smile or look.

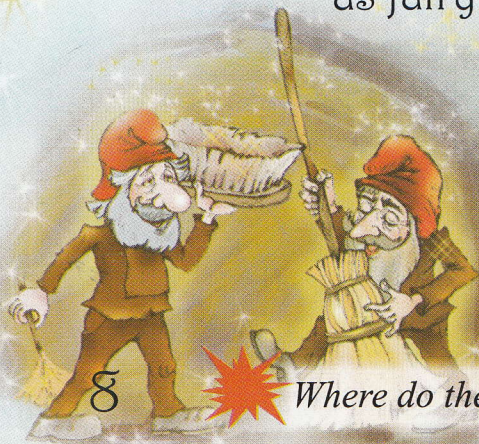
The woman-fairies are quite rare. They are either very fat or slim. Skinny is a good word to describe them. Though not very well dressed, they have red lips (as they like to put a lot of lipstick on) and long varnished nails.

*Can you describe one of the two fairies above?*

## Where Fairies Live



As the name says it, these troublemakers or sometimes do-gooders live in the imaginary realm of fairy tales, which is known as fairyland.



But folk imagination often brought them out of this distinct area and placed them into everyday surroundings. Thus, they can have their dwellings in trees, hills, streams or lakes.

In Ireland, for example, fairies are thought to inhabit mounds or hill forts, while in England, they are said to live in forests or mountains or water or air.

Some fairies, such as pixies, enjoy living in groups outdoors, while other fairies - hobgoblins, for instance - live alone in houses or barns, near humans.

Some live away from humans, in caves or tunnels dug in the heart of high mountains, such as the barbegazi in the Alps or the uldas in Lapland. They prefer the underground, but unlike the banshees in Ireland, they come up to the surface only in winter, when they have certain jobs to perform.

Others (the brownies or the goblins) seem to prefer life in the proximity of man, sharing the environment.

No matter where they live - indoors or outdoors - these supernatural creatures managed to gain a well-established position in tales, as there was always a certain belief in fairies.

